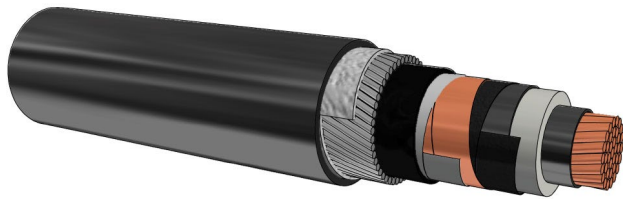


## MEDIUM VOLTAGE XLPE-ESKOM TYPE (WATER BLOCKED) 6.3/11kV XLPE Copper 1 Core Type A AWA (Water Blocked)



### General Data:

#### Properties:

<b>Aluminium</b>	1 Core
<b>Specification</b>	SANS 1339
<b>Type A</b>	Aluminium Wire Armour

#### Typical

#### Applications:

<b>Underground</b>	Underground Reticulation Main Distribution System Sub-stationed Mining ESKOM Electrical Networks
--------------------	---

#### Options:

<b>Standard</b>	XLPE
-----------------	------

### Standard Laying Conditions:

**Soil Thermal Resistance:** 1.2 km/W

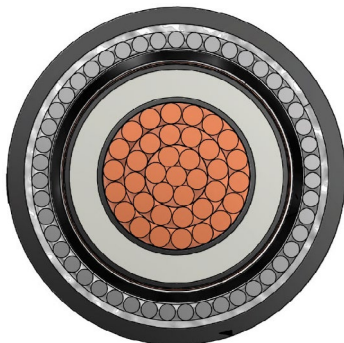
**Soil Temperature:** 25 °C

**Depth of Burial:** 800 mm

**Air Temperature:** 30 °C

**Single Circuit in Isolation**

**Tolerance on Dimensions** 5 %



Technical Information and Photographs from CBI electric

**Address:** 4 Branch Road, Germiston 1401, P.O. Box 678, Germiston 1400

**Email:** [aep.enquiries@actom.co.za](mailto:aep.enquiries@actom.co.za)

**Tel:** +27 11 878 3050

**Website:** [www.actomep.co.za](http://www.actomep.co.za)

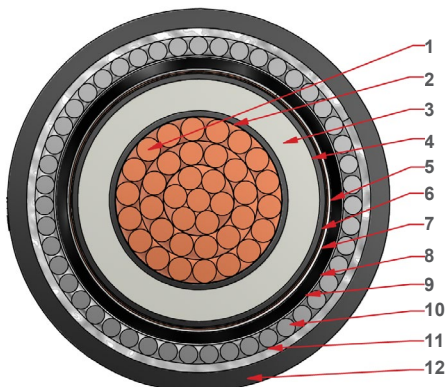
## MEDIUM VOLTAGE XLPE-ESKOM TYPE (WATER BLOCKED)

### 6.3/11kV XLPE Copper 1 Core Type A AWA (Water Blocked)

#### Cable Description:

	185 mm <sup>2</sup>		300 mm <sup>2</sup>		630 mm <sup>2</sup>	
	Thick. nom mm	Dia. nom mm	Thick. nom mm	Dia. nom mm	Thick. nom mm	Dia. nom mm
1. Copper Conductor		16.2		20.7		30.4
Water Blocked with Yarns						
2. Semi-Conducting Conductor Screen	0.7	17.9	0.7	24.0	1.0	34.5
3. XLPE Insulation	3.4	24.9	3.4	31.0	3.4	41.4
4. Semi-Conducting Core Screen	0.6	26.3	0.6	32.4	0.6	42.8
5. Semi-Conducting Water Blocking Tape	0.3	27.2	0.3	33.3	0.3	43.7
6. Copper Tape	0.1	27.5	0.1	33.6	0.1	44.0
7. Semi-Conducting Water Blocking Tape	0.3	28.4	0.3	34.5	0.3	44.9
8. FR PVC Bedding	1.2	30.8	1.2	37.0	1.4	47.8
9. Non Conductive Water Blocking Tape	0.3	31.4	0.3	37.6	0.3	48.4
10. Aluminium Wire Armour	2.0	35.4	2.0	41.6	2.5	53.4
11. Non Conductive Water Blocking Tape	0.3	36.0	0.3	42.2	0.3	54.0
12. MDPE Outer Sheath	2.1	40.3	2.4	46.7	2.6	59.3

Tolerance (0 to 5 %)



Technical Information and Photographs from CBI electric

Address: 4 Branch Road, Germiston 1401, P.O. Box 678, Germiston 1400

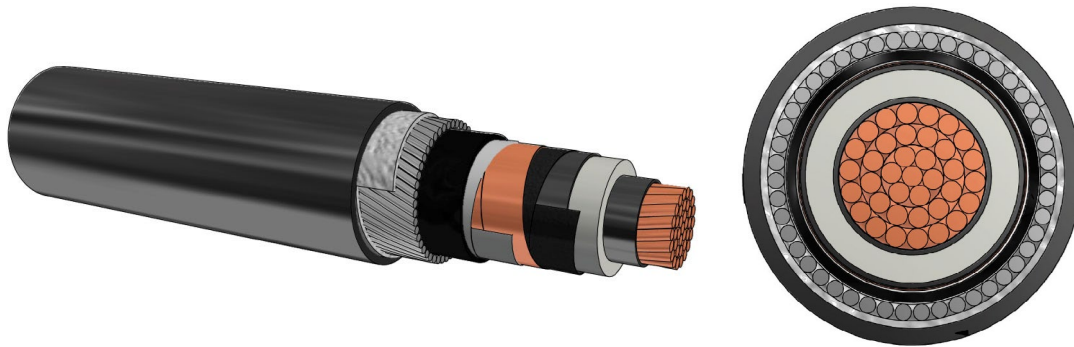
Email: [aep.enquiries@actom.co.za](mailto:aep.enquiries@actom.co.za)

Tel: +27 11 878 3050

Website: [www.actomep.co.za](http://www.actomep.co.za)

## MEDIUM VOLTAGE XLPE-ESKOM TYPE (WATER BLOCKED)

### 6.3/11kV XLPE Copper 1 Core Type A AWA (Water Blocked)



#### Product Information:

Cable Size (mm <sup>2</sup> )	Approximate Diameter (mm)	Current Rating (trefoil) (A)			Approximate Cable Mass (kg)	
		Ground	Air in Shade	Air in Direct Sunlight	Cable	Gross (500m)
185	40.3	412	524		3.1	1800
300	46.7	520	688		4.3	2550
630	59.32	674	961	749	8.2	4727



Technical Information

Address: 4 Branch Road, Germiston 1401, P.O. Box 678, Germiston 1400

## Complete your Project:

Please select the items you require and we will be in touch

### Cables and Wires:

Indoor  
Outdoor  
General  
Other  
Let an ACTOM  
Specialist Contact you

### Lighting:

Indoor  
Outdoor  
General  
Other  
Let an ACTOM  
Specialist Contact you

### Transformers (Distribution):

Indoor  
Outdoor  
General  
Other  
Let an ACTOM  
Specialist Contact you

### Accessories:

Indoor  
Outdoor  
General  
Other  
Let an ACTOM  
Specialist Contact you

### Specific Information:

Address: 4 Branch Road, Germiston 1401, P.O. Box 678, Germiston 1400

## For more Information on this Product Please Send us the Following

### Product Information:

Product Name:

Quantity:

Project Name:

Date the Product is required:

### Your Contact Information:

Name and Surname:

Company:

Email:

Phone Number:

Province:

## Thank You

### For having a Look at this Product

Please send this PDF back to us with all your Information

Scan the QR Code to visit our Website:

